

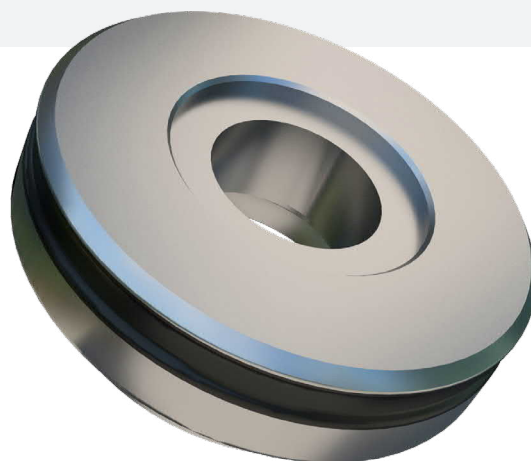
Conical Bearing

Each bush comprises of a high tolerance conical metals with high quality natural rubber compounds featuring low creep and high tear and tensile properties. This provides for high fatigue resistance at high loads and movements. They also provide superior shock attenuation whilst providing good control in the radial and axial directions.

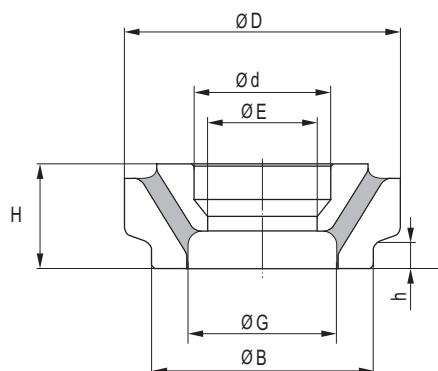
Conical bearings are used usually in pairs to transfer radial and axial loads whilst allowing large torsional movement and some conical. These are therefore suitable in applications where controlled flexibility is required such as in large travel suspension systems.

The high accuracy components provide:

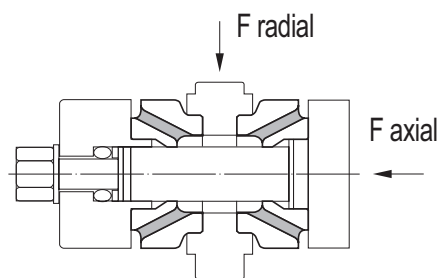
- High fatigue life
- Wide radial load range
- High torsional movement



TECHNICAL DRAWING



TYPICAL FITTING ARRANGEMENT



The conical bearings shall be mounted in pairs and preloaded axial roughly 7 mm each. Installed with an axial pre-loaded

PRODUCT DATA

| DRAWING NO. | PART NO. | TYPE | DIMENSIONS (mm) | | | | | | | AXIAL | | RADIAL STIFFNESS (N/mm) |
|-------------|----------|---------|-----------------|----|-----|-----|----|----|------|------------------|----------------|-------------------------|
| | | | H | h | ØD | ØB | ØE | Ød | ØG | STIFFNESS (N/mm) | MAX. LOAD (kg) | |
| 040 18 084 | 96734 | NR | 41 | 9 | 120 | 90 | - | 46 | 54 | 34800 | 5000 | - |
| 040 18 827 | 2121948 | NR39 | 41 | 9 | 120 | 90 | - | 46 | 50.5 | 150000 | 5000 | - |
| 040 18 050 | 96133 | NR | 41 | 10 | 115 | 90 | 40 | 60 | 54 | 130000 | 13000 | 30000 |
| 040 18 902 | 49014124 | NR | 41.2 | 7 | 125 | 90 | - | 46 | 54 | 60000 | 6000 | 5000 |
| 040 18 876 | 49026815 | 45 NR11 | 41.8 | 10 | 112 | 90 | 44 | 55 | 60 | 17000 | 3100 | 17000 |
| | 49009121 | 50 NR11 | | | | | | | | 22000 | 4000 | 22000 |
| | 49026816 | 60 NR11 | | | | | | | | 34000 | 6100 | 34000 |
| | 2129382 | 70 NR11 | | | | | | | | 55000 | 9900 | 55000 |
| 4059 | 54000585 | NR | 41.8 | 10 | 125 | 100 | 54 | 65 | 70 | 34000 | 6100 | 34000 |
| 201553 | 54000884 | NR | 42.2 | 8 | 115 | 90 | 40 | 60 | 48 | 32000 | 7000 | 3080 |
| 031 18 809 | 596222 | NR | 45 | 9 | 125 | 90 | - | 46 | 54 | 10200 | 2000 | - |