

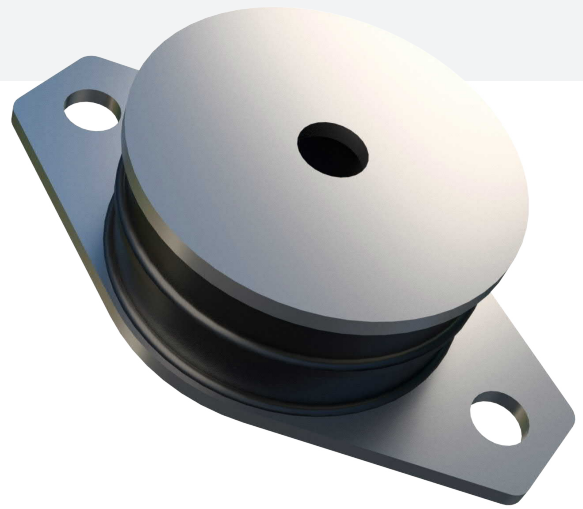
Circular SAW Mounting

The metal interleaf incorporated in the design provides a higher compression to shear stiffness ratio, thereby increasing the load capacity in the compression or combined compression and shear modes.

The 17-1780 engine mounting features a void in the rubber section to allow the use of a central snubber device. 17-1780 can be fitted with a rebound washer for mobile applications.

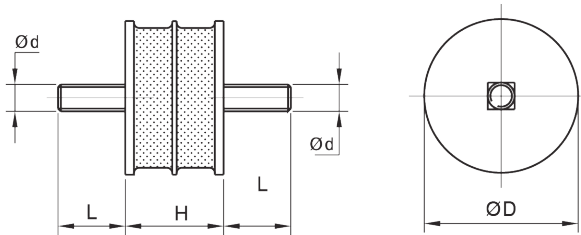
Typical Applications Include:

- Vibratory rollers
- Small vibrating screens
- Small engines

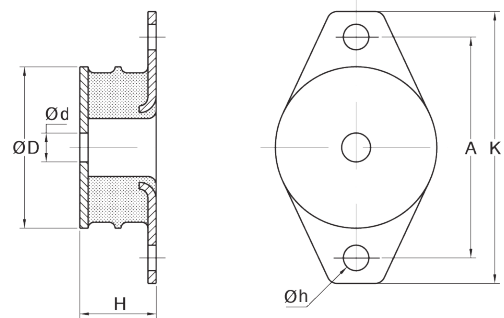


TECHNICAL DRAWING

17-1392



17-1780



PRODUCT DATA

DRAWING NO.	PART NO.	TYPE	DIMENSIONS (mm)							MAX. LOAD (kg)	
			ØD	H	L	Ød	A	K	Øh	COMPRESSION	SHEAR
17-1392	10-00492	45 °IRHD	57	37	25	M10	-	-	-	120	50
	10-00493	60 °IRHD								250	70
	10-00494	70 °IRHD								330	85
17-1780	10-00577	45 °IRHD	95	45	-	17	130	160	15	180	135
	10-00578	60 °IRHD								350	160