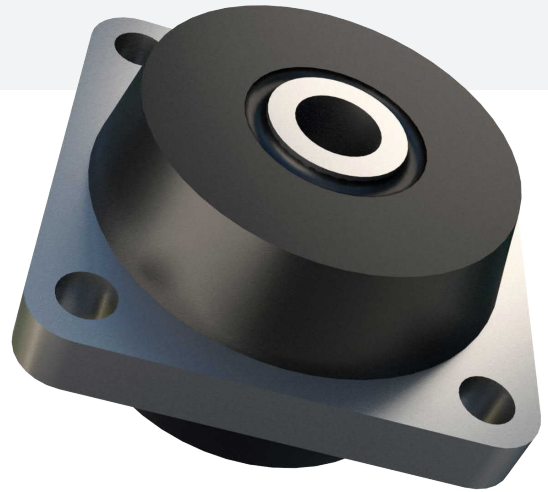


Cab Mount

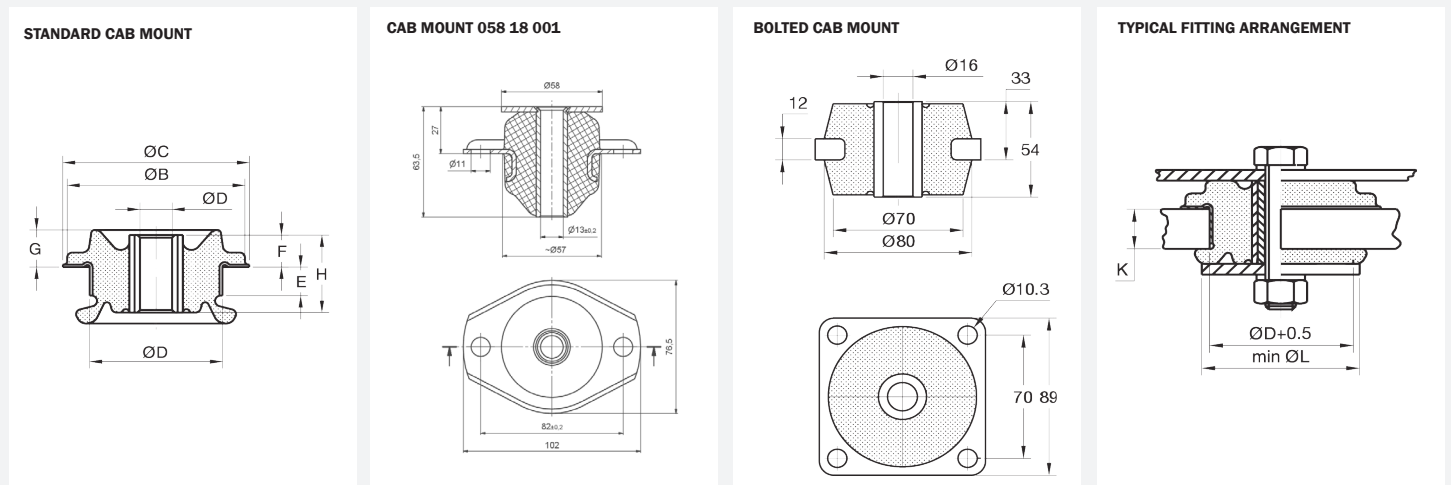
The CAB mount has been designed to provide optimum suspension characteristics. This has been achieved through ensuring the Compression and Shear stiffness characteristics being relatively stiff in their respective directions. The CAB mounts can withstand small shock loadings to help improve driving conditions for the operator. The mount should be installed with washers top and bottom to ensure a failsafe system.

Typical applications include:

- Commercial and Off-Highway vehicles
- Tractors
- Engines



TECHNICAL DRAWING



PRODUCT DATA

DRAWING NO.	PART NO.	Type	DIMENSIONS (mm)										AXIAL MAX. LOAD (kg)	BOLT SIZE	MAX. BOLT TORQUE (Nm)	AXIAL STIFFNESS (N/mm)	WASHER PART NO.
			ØD	ØB	ØC	Ød	E	F	G	H	K	L					
STANDARD CAB MOUNT																	
11-1028	20-00875	45 °IRHD											75	M16	250	390	20-00532
	20-01109	60 °IRHD	59	-	80	16	-	20	-	40	16	80	150			780	
	20-01035	65 °IRHD											180			950	
11-1027	20-01107	45 °IRHD											75	M20	380	390	20-00003
	20-00002	50 °IRHD	59	-	80	20	-	20	-	40	16	80	95			495	
	20-01061	55 °IRHD											120			626	
	20-00874	65 °IRHD											180			950	
17-1671-1	10-00563	45 °IRHD	75	100	105	16.5	17	19	22	46	20	105	160	M16	180	330	20-00533
17-1997-1	10-00626	45 °IRHD	75	100	105	16.5	17	19	22	46	20	105	190	M16	180	600	20-01494
17-1650	10-00552	45 °IRHD	75	100	105	22	17	19	22	46	20	105	300	M20	180	464	20-00533
	10-00944	60 °IRHD											500			1200	
17-1650-1	10-00554	45 °IRHD	75	100	105	16.5	17	19	22	46	20	105	300	M16	180	464	20-00533
	10-00555	60 °IRHD											500			1200	
17-1814	10-00598	45 °IRHD											410	M24	270	1797	20-00534
	10-00603	60 °IRHD	89	115	120	25	23	13	21	47	25	120	760			3314	
	10-04461	70 °IRHD											1120			4870	
058 18 001	91928	45 NR 11	SEE DRAWINGS										210	M12	35	300	93950
	90827	60 NR 11											430			620	
	92539	70 NR11											630			900	

Cab Mount

PRODUCT DATA

DRAWING NO.	PART NO.	Type	DIMENSIONS (mm)	AXIAL MAX. LOAD (kg)	BOLT SIZE	MAX. BOLT TORQUE (Nm)	AXIAL STIFFNESS (N/mm)	WASHER PART NO.
BOLTED CAB MOUNT								
17-0890	10-00440	45 °IRHD	SEE DRAWINGS	300	M16	250	1027	20-00532
	10-00441	60 °IRHD		500			1693	
	10-00442	70 °IRHD		750			2000	